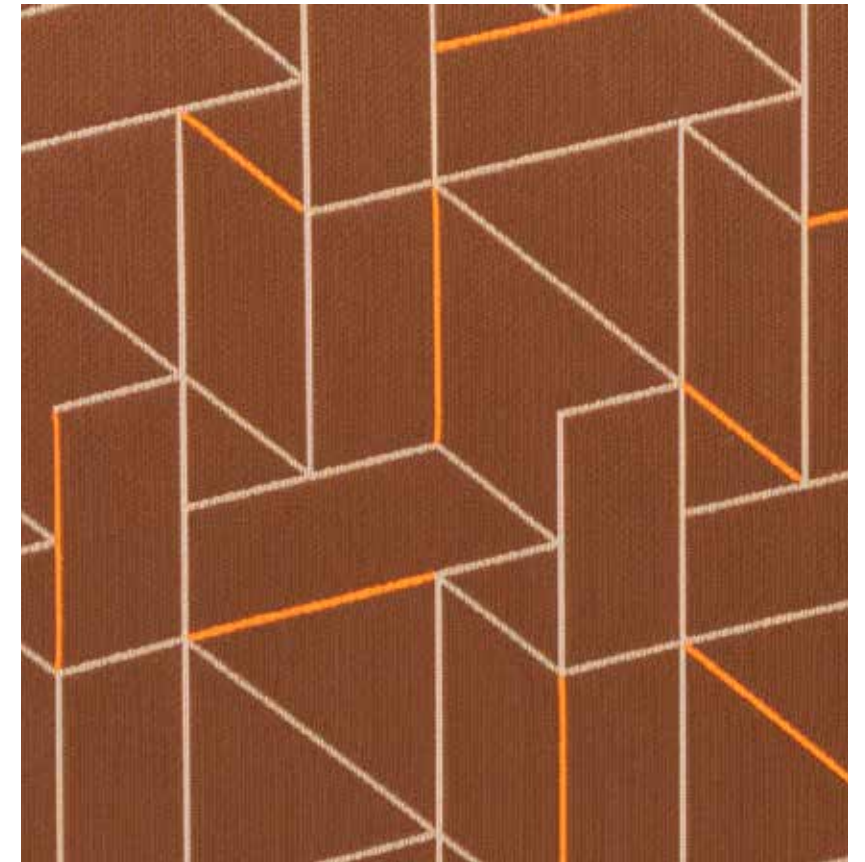


Split Signal

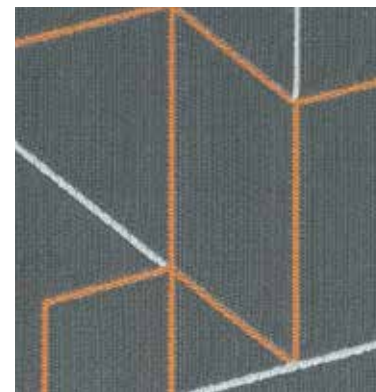
L U N A



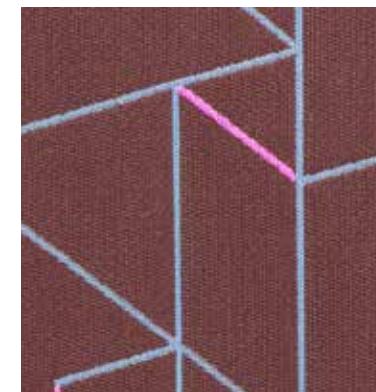
Activate
UPL001



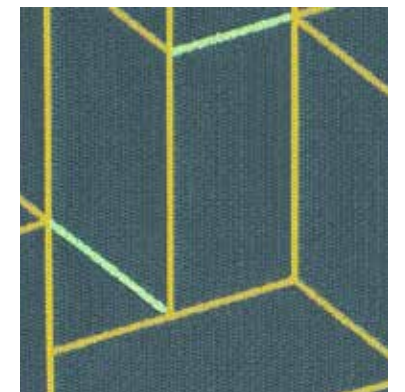
Relay
UPL003



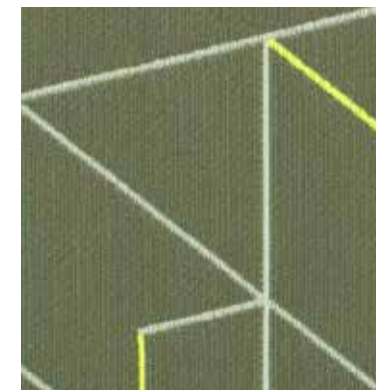
Route
UPL002



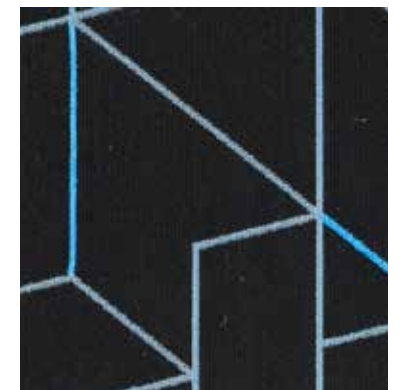
Current
UPL004



Greenlight
UPL006



Amp
UPL005



Night Train
UPL007

Split Signal

Upholstery

Specifications

| | |
|---------------------------|---|
| Application: | Upholstery |
| Content: | 33% Cotton, 28% Polyester, 15% Post-Consumer Polyester, 24% Nylon |
| Finish: | None |
| Backing: | Acrylic |
| Width: | 54" |
| Repeat: | 7 3/4" V x 14" H 14" V x 7 3/4" H (railroaded) |
| Weight: | 20.25 oz/ly |
| Warranty: | 3 years |
| Country of Origin: | United States |

Performance

| | |
|-----------------------|---|
| Flammability: | California Technical Bulletin 117-2013 |
| Abrasion: | 100,000 double rubs (Wyzenbeek) |
| Lightfastness: | 40+ hours |
| Maintenance: | S |
| Notes: | |



Colors

| | |
|-------------|--------|
| Activate | UPL001 |
| Route | UPL002 |
| Relay | UPL003 |
| Current | UPL004 |
| Amp | UPL005 |
| Greenlight | UPL006 |
| Night Train | UPL007 |

Complete specifications can be found at lunatextiles.com

L U N A

www.lunatextiles.com | tel 415.252.7125 | [@lunatextiles](https://twitter.com/lunatextiles)

© 2022 Luna Textiles. Split Signal is a proprietary design owned by Luna Textiles. It is not to be duplicated or translated in any form or format by any party without the prior written consent of Luna Textiles.